

# AIM SERIES 2 IN-WALL SPEAKERS

ATX100 | AIM2LCR55 | AIM2LCR52

Dolby Atmos® Enabled Speaker Systems



**SpeakerCraft®**



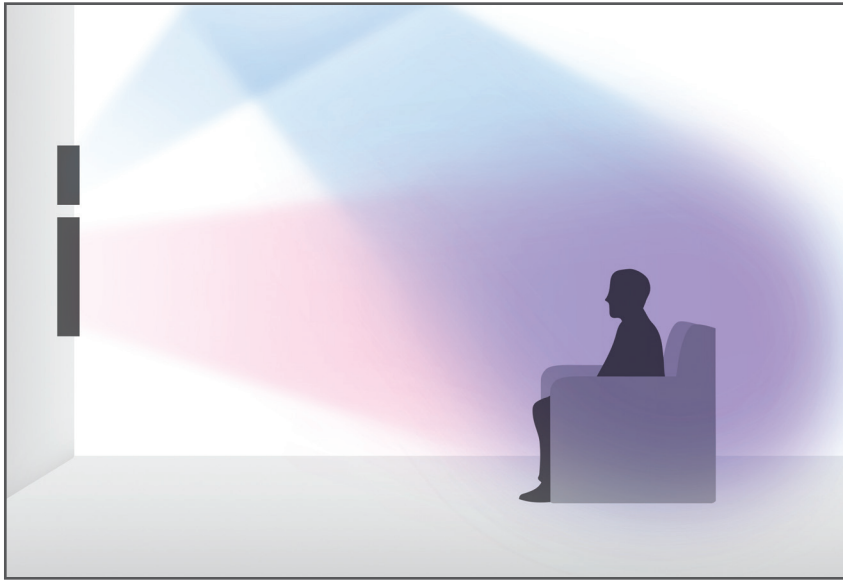
# A NEW HEIGHT IN HOME THEATER AUDIO

## SPEAKERCRAFT AIM SERIES 2 DOLBY ATMOS® ENABLED SYSTEMS

The SpeakerCraft heritage is one of breakthrough innovation. The new AIM Series 2 In-Wall family embraces that tradition, with innovations crafted for Dolby Atmos® and other object-based surround audio formats. Dolby Atmos delivers a more immersive and enveloping experience than traditional surround systems giving content creators the ability to “craft” audio as never before. We have crafted this new line as the first in-wall systems designed to bring out the maximum performance of Dolby Atmos.

At the heart of these systems is the world's first Dolby Atmos® Enabled in-wall height speaker – the **ATX100** – which delivers the “height” elements that define the enveloping Dolby Atmos surround experience. The “height” elements are not just a ceiling delivery of the audio signal – they are essential “from above” parts of the soundtrack that work with the front, side and rear content information for maximum immersion. The **ATX100** projects the height content to reflect off the ceiling, showering the listener in an enveloping home theater experience. When paired with the new AIM Series 2 in-wall speakers – the **AIM LCR5 FIVE Series 2** or the **AIM LCR5 TWO Series 2** – the combination creates a bold, premium, amazingly immersive speaker system. These new systems deliver an exceptional Dolby Atmos enabled home theater experience in any room, on any budget.



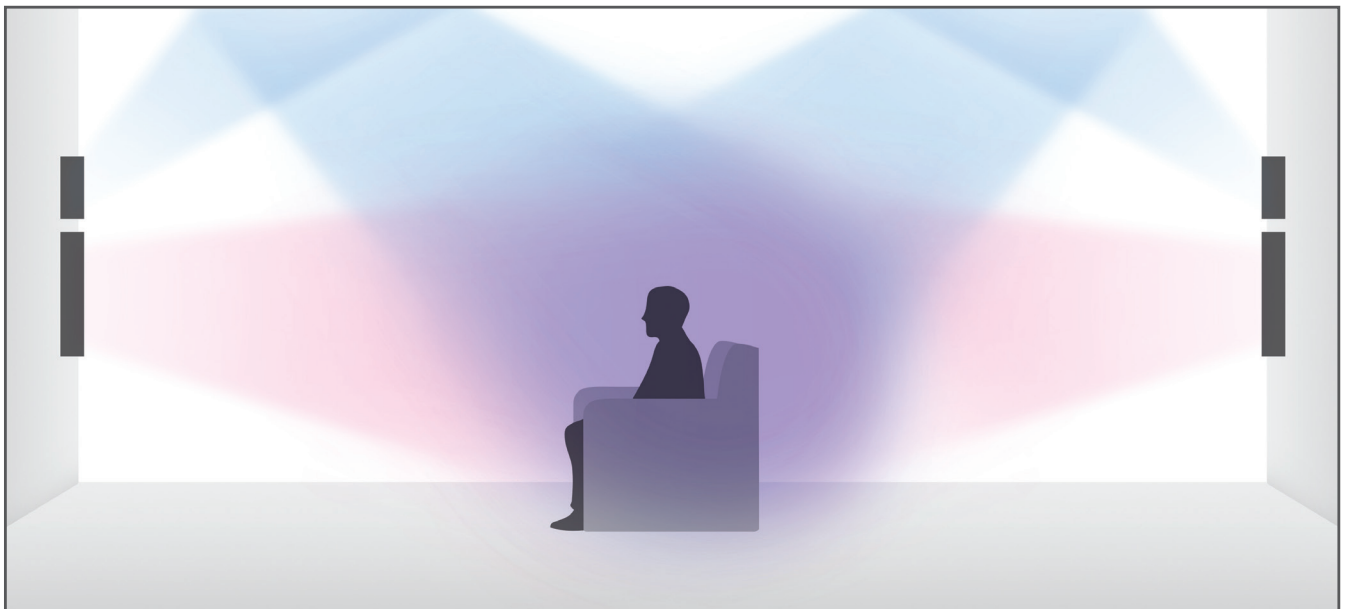


## THE ENVELOPING SOUND EXPERIENCE:

### Figure 1

- The upward-firing drivers in the **ATX100** reflect the Dolby Atmos "height" elements of the ceiling for the ultimate enveloping experience.
- The Arrayed Point Source™ tweeter module in the **AIM Series 2 LCR5** family maximizes uniform dispersion in the critical midrange and high frequencies.

Of course, the Dolby Atmos enabled **AIM Series 2 LCR5** speaker systems can be combined with rear and side in-wall or in-ceiling configurations to meet the needs of any installation.



### Figure 2

This image shows additional **ATX100** and **AIM2LCR5** speakers adding additional height and rear surround elements. These systems can scale up to create a fully in-wall Dolby Atmos enabled experiences. Add a SpeakerCraft Profile Cinema Sub10, 10" in-wall subwoofer and you have the speaker elements needed for an immersive, 5.1.4 Dolby Atmos experience.

#### Special Note:

The ATX100 can also be combined with one of the three Profile AIM LCR5 speakers for additional options for Dolby Atmos enabled in-wall speaker systems.



## AIM LCR5 FIVE Series 2

Aim-able Left Center Right Speaker

Order# AIM2LCR55

- Magnetically Attached, Low Profile, Full Coverage Grille
- Dual, 5 1/4" Woven Kevlar Cone Woofers, with extended pole pieces and forced convection cooling
  - Core periphery magnet vents with flux modulation control geometry to improve power handling and minimize inductance modulation
  - 4 Layer High Inductance Copper Clad Aluminum Voice Coil
- Arrayed Point Source™ (APS) Tweeter Module with three pivot-able, 1" Titanium Dome Tweeters
  - Mounted on a Rotational Sound Baffle for Custom Sound Steering.
- 2nd and 3rd Order Asymmetrical Crossover Design
- Front-Mounted Tweeter and Dialog Compensation Switches
- Pivot-able Sound Baffle for Precise Acoustic AIM-ability
- Acoustic Isolation Technology™

Power Handling: 190 Watts  
 Sensitivity: 91dB 1W/1m  
 Impedance: 8 Ohm  
 Frequency Response: 48Hz - 22kHz  
 Product Dims (grille on): 18 1/8" x 9" x 3 7/8" (461 x 227 x 99mm)  
 Cut-Out Diameter: 16 15/16" x 7 3/4" (430 x 197mm)



## AIM LCR5 TWO Series 2

Aim-able Left Center Right Speaker

Order# AIM2LCR52

- Magnetically Attached, Low Profile, Full Coverage Grille
- Dual, 5 1/4" Glass and Carbon Fiber Cone Woofers, with extended pole pieces
  - 4 Layer High Inductance Voice Coil
- Arrayed Point Source™ (APS) Tweeter Module with three pivot-able, 1" Soft Dome Tweeters
  - Mounted on a Rotational Sound Baffle for Custom Sound Steering
- 2nd and 3rd Order Asymmetrical Crossover Design
- Front-Mounted Tweeter and Dialog Compensation Switches
- Pivot-able Sound Baffle for Precise Acoustic AIM-ability
- Acoustic Isolation Technology™

Power Handling: 135 Watts  
 Sensitivity: 89dB 1W/1m  
 Impedance: 8 Ohm  
 Frequency Response: 52Hz - 20kHz  
 Product Dims (grille on): 18 1/8" x 9" x 3 7/8" (461 x 227 x 99mm)  
 Cut-Out Diameter: 16 15/16" x 7 3/4" (430 x 197mm)



## AIM Series 2 ATX100

AIM Series 2 Dolby Atmos® Enabled In-Wall Height Module

Order# ATX100

- Meets Dolby Atmos Enabled Requirements for Residential Applications
- Magnetically Attached, Low Profile, Full Coverage Grille
- 2-Way Speaker Compliment in MTM (Mid-Tweet-Mid) Alignment
- Dual, 2 1/2" FEA Optimized Kevlar® Reinforced Pulp Mid-Bass Drivers
- 3/4" Titanium Dome Tweeter with High Energy Neodymium Magnet Structure
- Acoustically Controlled Wave Guide
- Acoustic Isolation Technology™
- Fully integrated, acoustic back-box for precise sound reproduction

Power Handling: 125 watts  
 Sensitivity: 89dB 1W/1m  
 Impedance: 8 Ohm  
 Frequency Response: 90Hz - 20kHz  
 Product Dims (grille on): 12 1/4" x 9" x 3 15/16" (310mm x 229mm x 100mm)  
 Cut-Out Diameter: 11" x 7 3/4" (279mm x 197mm)

### Additional items to complete Dolby Atmos® Enabled system installations:

#### GRLATXAIM2

Grille Kit for the combination of an AIM Series 2 LCR5 Family Speaker AND the ATX100 Dolby Atmos Enabled in-wall height speaker

#### GRLATXPROAIM

Grille Kit for the combination of a Profile AIM LCR5 Family Speaker AND the ATX100 Dolby Atmos Enabled in-wall height speaker

#### BKTATX100

Instalock New Construction Bracket for the ATX100 Dolby Atmos Enabled in-wall height speaker

#### BKTATXAIM2LCR5

Instalock New Construction Bracket for the combination of the AIM LCR5 Series 2 family of speakers AND the ATX100 Dolby Atmos Enabled speaker

#### BKTAIM2LCR5

Instalock New Construction Bracket for the AIM LCR5 Series 2 family of speakers

#### BKTPROAIMLCR5

Instalock New Construction Bracket for the combination of the Profile AIM LCR5 family of speakers AND the ATX100 Dolby Atmos Enabled height speaker

